

Piston-rod brake for Cylinders ISO 6432

Bores from 20 to 25 mm



Standard executions		
Version	Symbol	Type
Normally closed		ABS....CRD
Normally open		ABS....ARD



Series of piston rod brakes rod units for cylinders ISO 6432 with pneumatic releasing and rod mechanical locking obtained through a double jaw (the locking is pneumatic in the type normally open).

For the application of the locking rod unit to a cylinder ISO 6432 it is necessary to order the cylinder with the rod arranged for this (the extended one in hardened steel, option B; see pages 1.2.1-1.2.10).

Used in applications when compressed air failure would present hazardous cylinder movement.

How to order: ABS020CRD

ABS	020	CRD
Type	Bore	Option

For standard items, codes and dimensions see tables page 1.75.5.

Technical data	
Fluid	Compressed filtered air with or without lubrication
Pressure range	4 ÷ 8 bar
Temperature range	-10 °C ÷ + 80°C
Materials	Body: Anodised aluminium Jaws: Brass Seals: Nitrile rubber (NBR) Locking cylinder: Anodised aluminium

Cylinder bore (mm)	Locking force (N)
20	300
25	400

The locking force refers to static load; slidings can happen exceeding the maximum indicated values.

The locking rod unit must be unclamped only when both chambers of the cylinder are in pressure, otherwise the cylinder rod could move not uniformly and this could cause damage to the application.

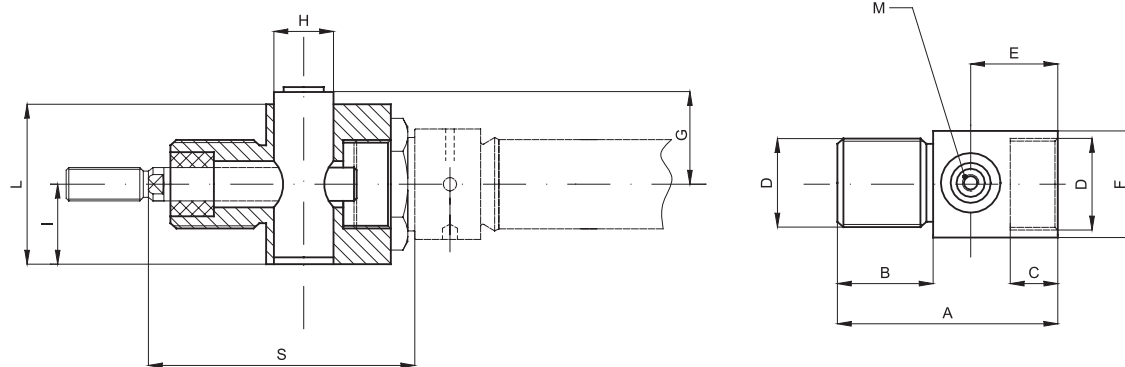
Seal kits not available.

Piston-rod brake for Cylinders ISO 6432

Bores from 20 to 25 mm



type: **ABS**



For cylinder ø mm	A	B	C	E	F	G	H	I	D	L	M	S
20	58	23	12	24	27	21	20	19	M22x1,5	38	M5	72
25	58	23	12	24	27	21	20	19	M22x1,5	38	M5	74

Normally closed

Code	Item	For cylinder ø mm
042022	ABS 0020CRD	20
042023	ABS 0025CRD	25

Normally open

Code	Item	For cylinder ø mm
042032	ABS 0020ARD	20
042033	ABS 0025ARD	25